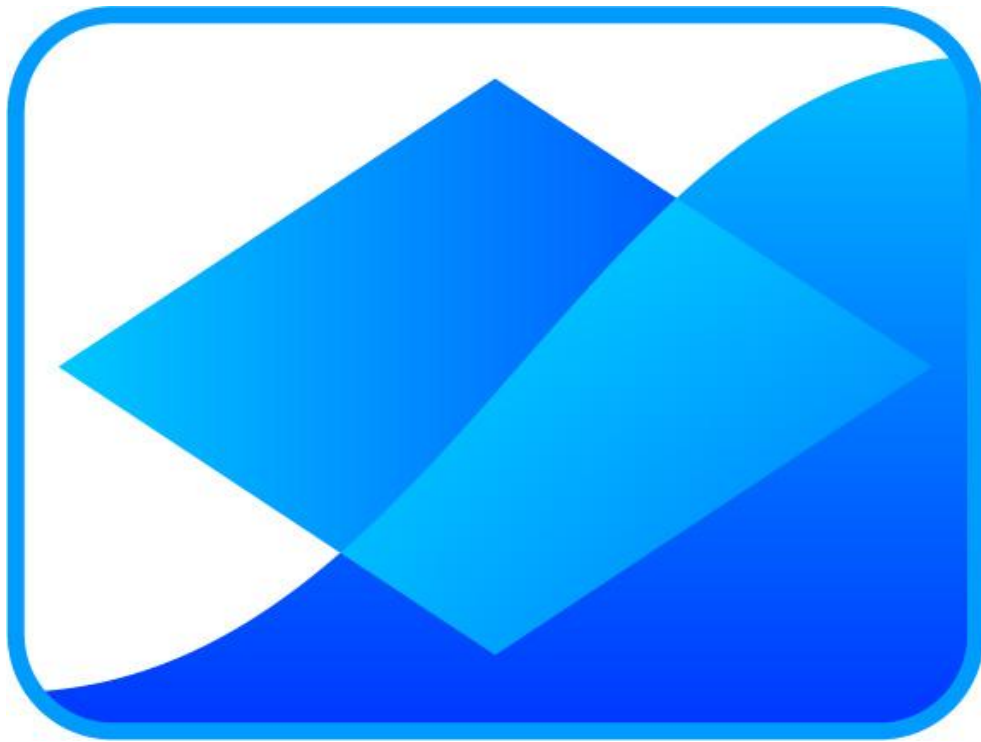


# MIX 2.0 tutorial



## Activating MIX 2.0

## Activating MIX 2.0

### Prerequisites

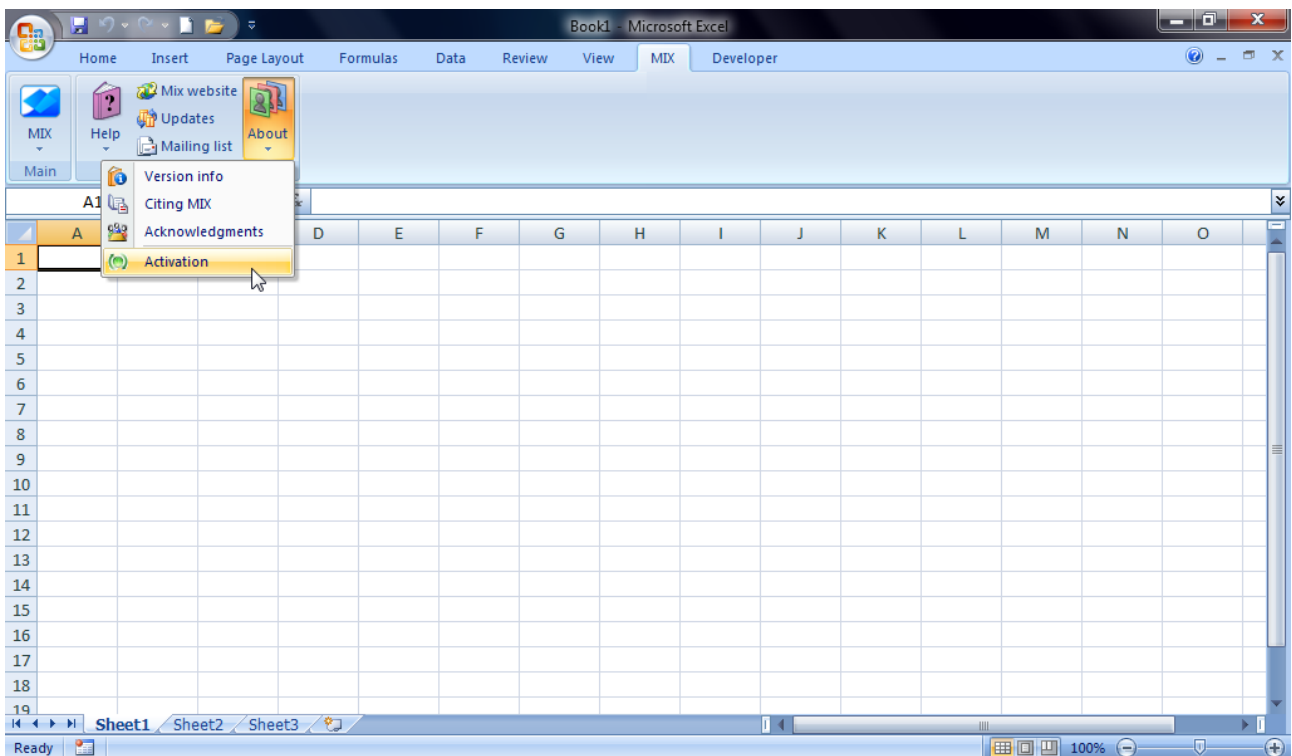
This tutorial assumes you installed MIX 2.0 Pro on a PC with Excel 2007 or later.

### Tutorial content

MIX 2.0 Pro requires activation. The preferred method of activation is via the MIX activation server. However, if this fails because of strict physical firewall settings, you can also activate locally by creating a validation file from inside MIX and sending it to us by e-mail. This tutorial shows the procedures for both types of activation.

### Accessing the activation interface

Activating MIX goes via the activation interface. Once MIX 2.0 has started up inside the Excel interface, click on 'Activation' in the 'Help' dropdown menu of the 'MIX' tab.



You will be shown the following dialog box:



Click on 'Activate' and the activation interface with activation options will be shown. You will also see the activation interface if you click 'Start MIX' in the 'MIX' dropdown menu of the 'Main' tab.

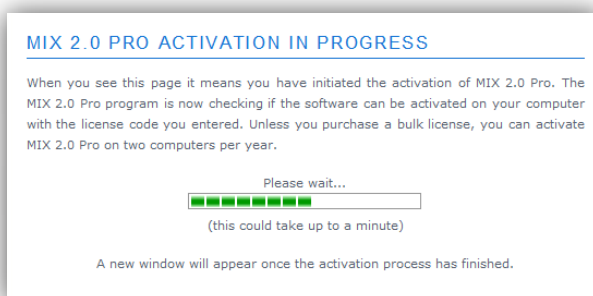
### Activation via the MIX activation server

Activation via the MIX activation server is quick and easy, but it requires an active internet connection and your Excel must have firewall permission to contact external servers. Commonly, this is possible without changing settings but if you are working at a company or academic institution that has strict firewall policies, the activation may fail. If this is the case for you, please refer to the next paragraph **Local activation**.

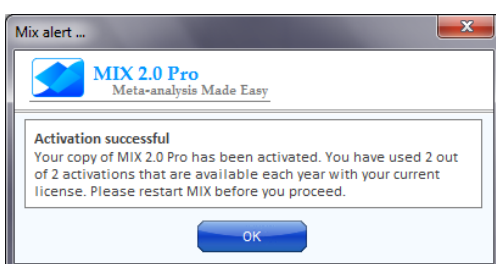
In any case, we recommend you to try the activation via the MIX activation server first because this method is quick and easy. Fill out your name and license key (sent to you automatically after purchasing MIX 2.0) in the activation interface, as shown below:



Upon clicking the 'Activate MIX 2.0 Pro...' button, your internet browser will start and will show you a page that contains a progress indicator like the one below:



If activation succeeds, you will be redirected to a web page that confirms the activation. When you go back to Excel, you will see the following message and you will be able to use MIX 2.0 Pro:



## Activating MIX 2.0

If MIX 2.0 cannot be activated, your browser will show a page that tells you that activation has failed and the reasons why that may have occurred. In addition, Excel shows you a message that MIX 2.0 Pro has not been activated and gives you the option to activate locally. Click 'OK' if you want to do that and click 'Cancel' if you want to try to activate via the activation server again at a later time.



### Local activation

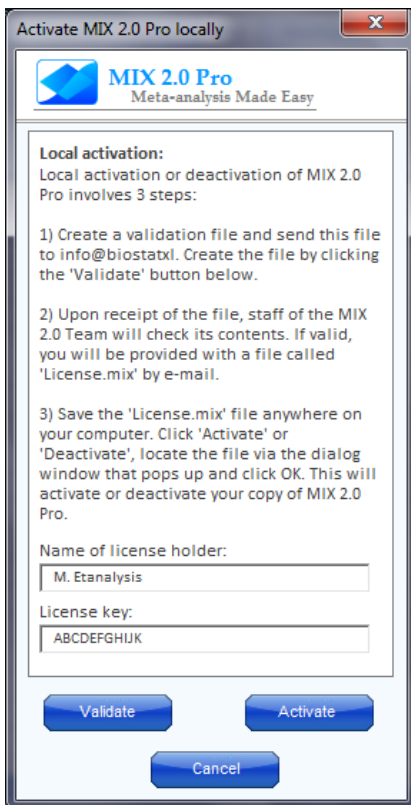
If activation fails and you do not choose to activate locally via the dialog shown above, you can perform a local activation by restarting the activation procedure and checking the box next to 'Local' in the activation interface.



If you click the 'Activate MIX 2.0 Pro' button while the 'Local' checkbox is checked, you will be shown a screen that explains how local activation involves 3 steps:

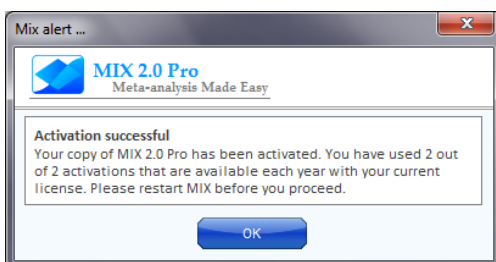
- 1) Create a validation file by clicking the 'Validate' button send this file to [info@biostatxl](mailto:info@biostatxl).
- 2) Staff of the MIX 2.0 Team will check the validation file and will send you a file called 'License.mix'.
- 3) Restart the local activation and use the received 'License.mix' file to activate.

Let's take a look at the first step. To create a validation file, enter the name under which you registered your MIX license in the 'Name of license holder' textbox and enter your license key in the 'License key' textbox. Then click 'Validate':



The next screen will ask you where you want to save the validation file. The file will be called 'Activation request [license key] for [license holder].xlsx'. For the screen shown above, the resulting file is 'Activation request ABCDEFGHIJK for M. Etanalysis.xlsx'. Send this file to info@biostatxl.com and generally you will receive an e-mail reply within 48 hours. The reply will have a 'License.mix' file as an attachment. This file can only be used for activation on the computer on which you created the validation file.

Upon receipt of the 'License.mix' file, save the file somewhere on your hard disk, and restart the local activation process. When you get to the screen where you previously clicked the 'Validate' button and created the validation file, click 'Activate'. Locate the 'License.mix' file when you are asked to do so and click 'OK'. You should now see a dialog box that tells you that MIX was activated. You can activate MIX on two computers, so if it is the second time you have used the license to activate a copy of MIX 2.0 Pro, your message will look something like this:



That was the tutorial. Good luck with your meta-analysis!