

MIX 2.0 tutorial



Creating datasets from Excel data

Prerequisites

This tutorial assumes you have activated and started MIX 2.0 Pro.

Tutorial content

Loading a built-in dataset in MIX is done via the Datawizard. In this tutorial, you will load a dataset from generic data in an Excel file. The methods used also apply to binary and continuous data.

Datasets for meta-analysis

MIX 2.0 uses three types of meta-analysis datasets: binary (event data), continuous (data summarized by mean, standard deviation, and sample size), and generic (data summarized by a generic measure with standard error). Virtually all types of data can be converted to fit the generic data format and MIX 2.0 also contains a converter that can help you with the conversions (see the tutorial '[Using the MIX 2.0 data converter](#)').

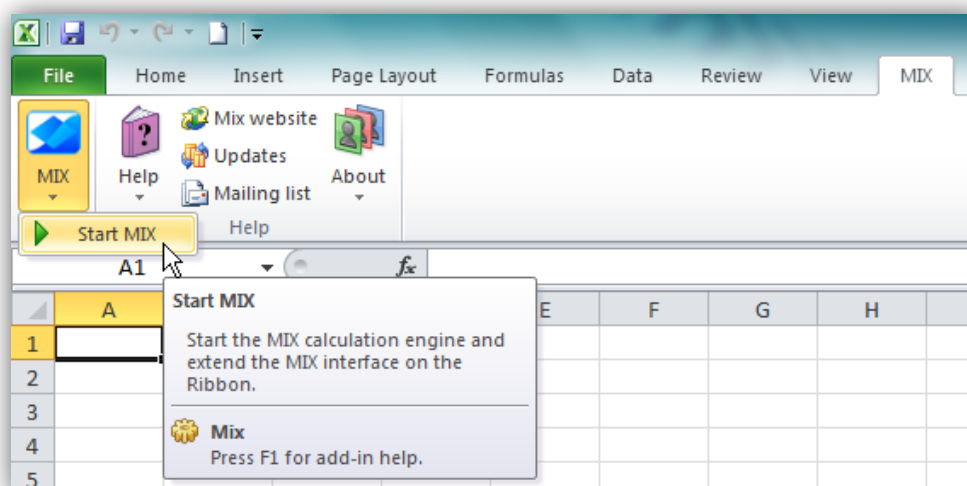
Example dataset for generic outcome data:

| Study ID | OR | CI- | CI+ | log(or) | se |
|----------|------|------|------|---------|------|
| Study 1 | 0.35 | 0.09 | 1.45 | -1.04 | 0.72 |
| Study 2 | 0.63 | 0.29 | 1.36 | -0.46 | 0.39 |
| Study 3 | 0.84 | 0.33 | 2.14 | -0.18 | 0.48 |
| Study 4 | 0.63 | 0.17 | 2.39 | -0.46 | 0.68 |
| Study 5 | 0.76 | 0.42 | 1.36 | -0.28 | 0.30 |
| Study 6 | 0.66 | 0.30 | 1.45 | -0.41 | 0.40 |
| Study 7 | 0.52 | 0.23 | 1.15 | -0.66 | 0.41 |
| Study 8 | 0.52 | 0.29 | 0.93 | -0.66 | 0.30 |
| Study 9 | 1.68 | 0.40 | 7.03 | 0.52 | 0.73 |
| Study 10 | 0.90 | 0.67 | 1.20 | -0.11 | 0.15 |

Copy and paste this dataset in the Excel file that is open in the Window that contains the MIX interface.

Starting the Datawizard

When you have just loaded MIX, click on 'MIX' > 'Start MIX':

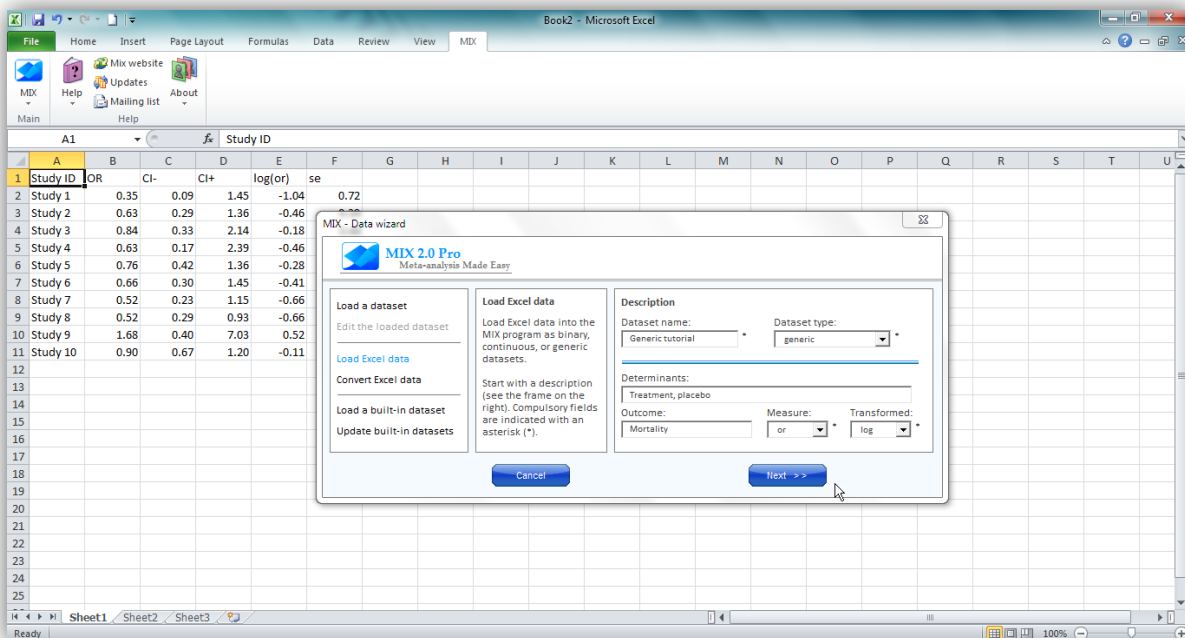


Creating datasets from Excel data

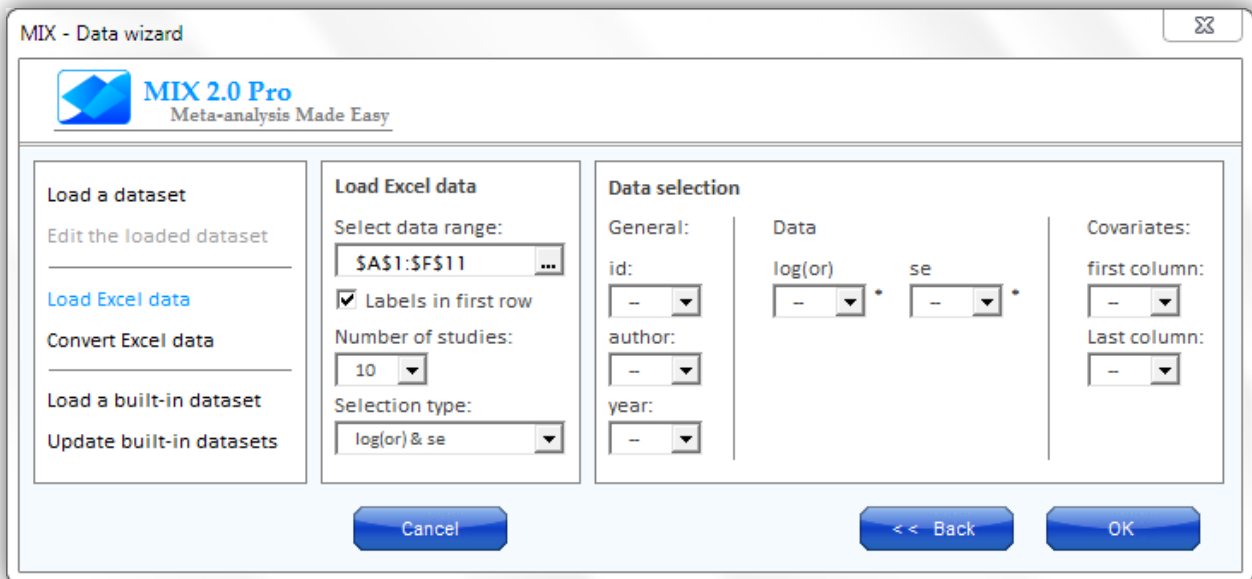
The following screen will appear:



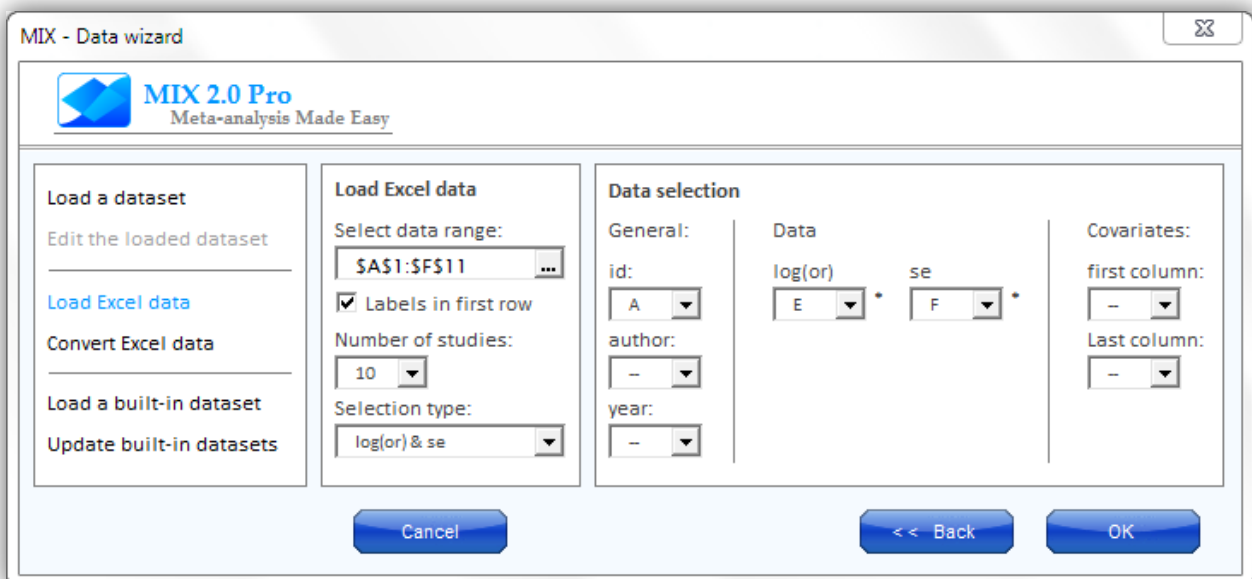
Choose 'Datawizard'. This will start the Datawizard. Next, click on 'Load Excel data' in the menu on the left of the Datawizard. The right side of the window will provide data entry options. The dataset name and dataset type are mandatory fields. It is also important that you choose the correct measure and the transformation. For this dataset the measure is the odds ratio (or) and the transformation is the log.



Click 'Next'. The screen that follows will take a guess at the range of the active worksheet that holds the data and it will provide you with some tools to select the appropriate rows for certain variables. In the screen below MIX has (correctly) guessed that the range A1:F11 holds the data and that there is a row with variable labels. If this guess be incorrect, you can select a different range by clicking on the '...' sign in the 'Select data range' box. The number of studies is (correctly) set at 10 (11 rows, minus the label row).



The next step is to select the columns for the variables shown in the 'Data selection' part. In this case, only the log odds ratio (log(or)) and the standard error (se) are mandatory. We will use the 'Study ID' variable in the dataset for 'id'. To do this, simply select the appropriate row in the dropdowns of the 'id', 'log(or)', and 'se' in the data selection screen. There are no covariates in the dataset, so when you're done, your screen should look as follows:



Click 'OK'. What follows is a basic check of your dataset. If no problems are found, you will be asked to enter the data or cancel the data entry. Choose 'Enter data'. Finally, you will be asked which Excel file you would like to use to hold the results of the analyses performed by MIX. Choose an Excel file from the dropdown list (all open Excel workbooks will be listed), and click OK. You are now ready to start your meta-analysis on your new dataset in MIX (or edit your dataset further). For details on editing datasets, see the tutorial ['Editing a dataset'](#)

That was the tutorial. Good luck with your meta-analysis!