

# MIX 2.0 tutorial



## Editing a dataset

## Editing a dataset

### Prerequisites

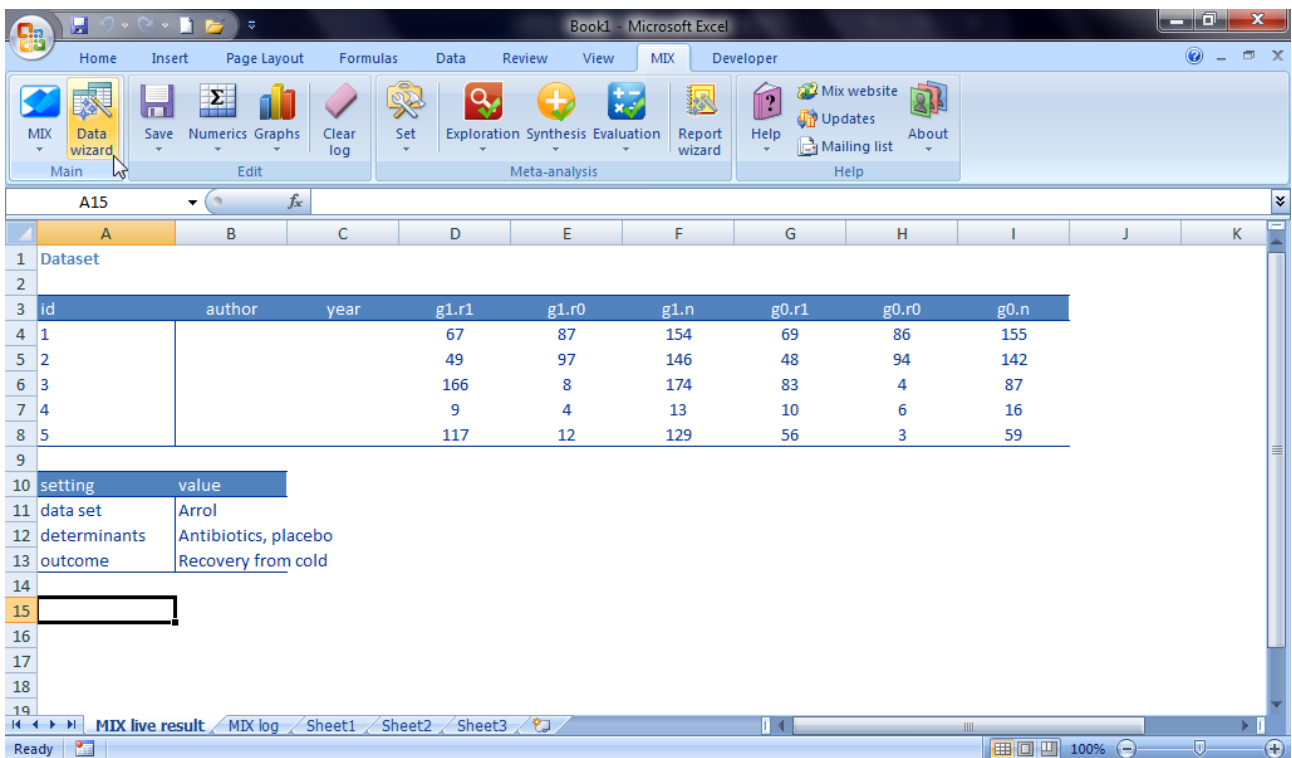
This tutorial assumes you have activated and started MIX 2.0 Pro and you have loaded the built-in dataset called 'Arrol'.

### Tutorial content

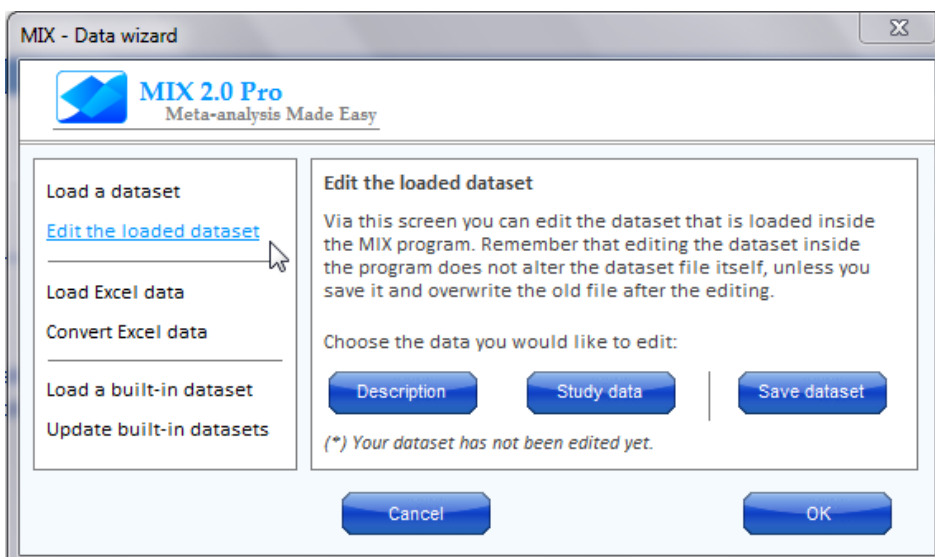
Editing a dataset in MIX is done via the Datawizard. In this tutorial, you will change the description, a value of an existing variable, and you will add a new variable.

### Changing the description of a dataset

First, start the Datawizard:



The Datawizard will pop up. Next, click on 'Edit the loaded dataset' in the menu on the left of the Datawizard.

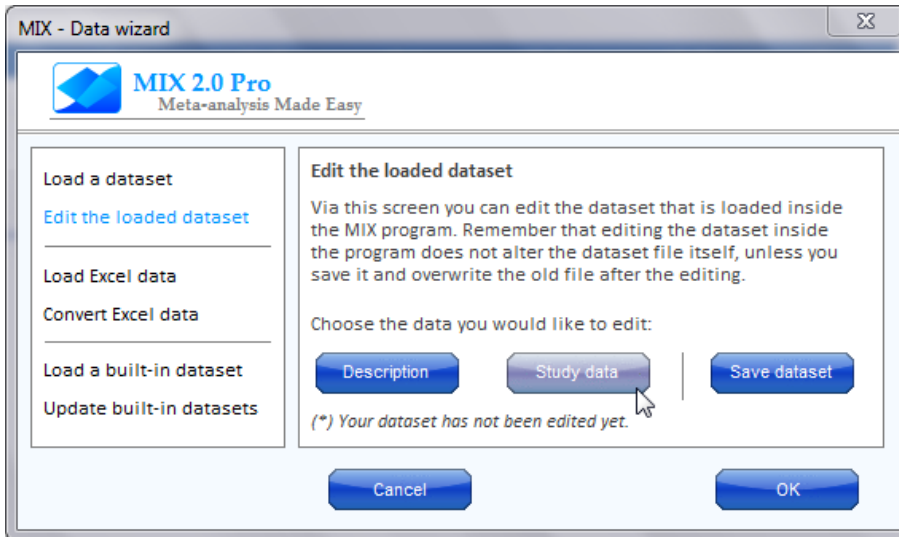




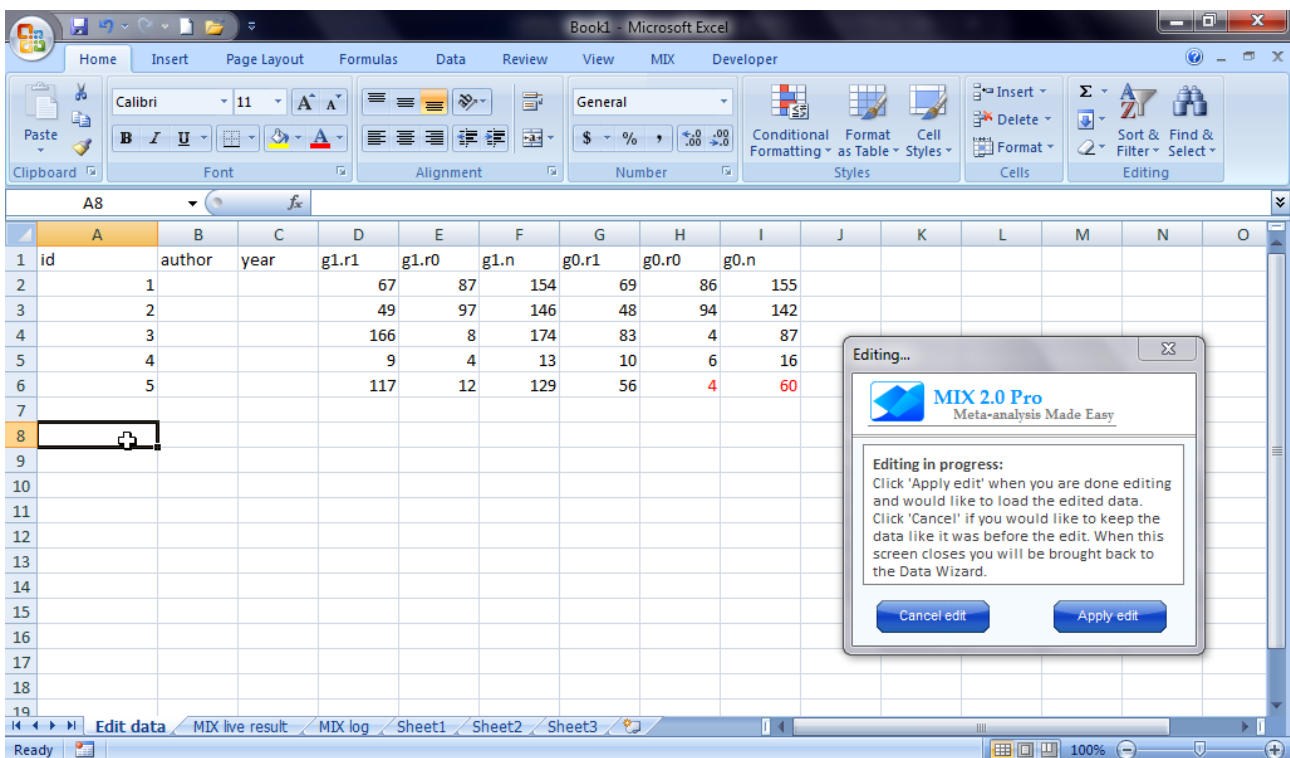
## Editing a dataset

### Changing a value of a variable in the dataset

You can also change a value of a variable in the dataset, for instance when you find out you made a mistake during data entry or when you receive additional data from a study author that requires you to edit the dataset. To edit actual values of variables in the dataset, click on the 'Study data' button in the 'Edit the loaded dataset' menu of the Datawizard.



The data of the current dataset will be shown in an Excel sheet, together with the 'Editing...' dialog box. For this tutorial, edit the data in cell H6 from 3 to 4 and the value in cell I6 from 59 to 60 (if you forget to change the last cell, MIX will warn you that the events and non-events are not consistent with the group size when you click 'Apply edit').



After completing the edit, click 'Apply edit' in the 'Editing...' dialog box and you will be brought back to the previous screen. Below the 'Description' button a text will appear saying "Your data edit has been applied successfully." After a data edit, the dataset output will be renewed automatically and you can see that there are now 4 events with group size 60 in group 0.

## Editing a dataset

id	author	year	g1.r1	g1.r0	g1.n	g0.r1	g0.r0	g0.n
1			67	87	154	69	86	155
2			49	97	146	48	94	142
3			166	8	174	83	4	87
4			9	4	13	10	6	16
5			117	12	129	56	4	60

setting	value
data set	Tutorial Arrol
determinants	Antibiotics, placebo
outcome	Recovery from cold

## Adding a new variable to a dataset

In this last part you will add a new variable to the dataset. A new variable should be added in the column directly after the last column used in the dataset sheet. Follow the instructions of the previous data edit but now add a variable called 'study bias' with the following values: 5, 6, 8, 7, 8. This is how it should look:

id	author	year	g1.r1	g1.r0	g1.n	g0.r1	g0.r0	g0.n	study bias
1	1		67	87	154	69	86	155	5
2	2		49	97	146	48	94	142	6
3	3		166	8	174	83	4	87	8
4	4		9	4	13	10	6	16	7
5	5		117	12	129	56	4	60	8

Editing...

**MIX 2.0 Pro**  
Meta-analysis Made Easy

Editing in progress:  
Click 'Apply edit' when you are done editing and would like to load the edited data.  
Click 'Cancel' if you would like to keep the data like it was before the edit. When this screen closes you will be brought back to the Data Wizard.

Cancel edit      Apply edit

When you click 'Apply edit' in the 'Editing...' dialog box your data edit will be applied and the dataset output will be renewed automatically. Verify that you have a new variable called 'study bias' in column J.

That was the tutorial. Good luck with your meta-analysis!