



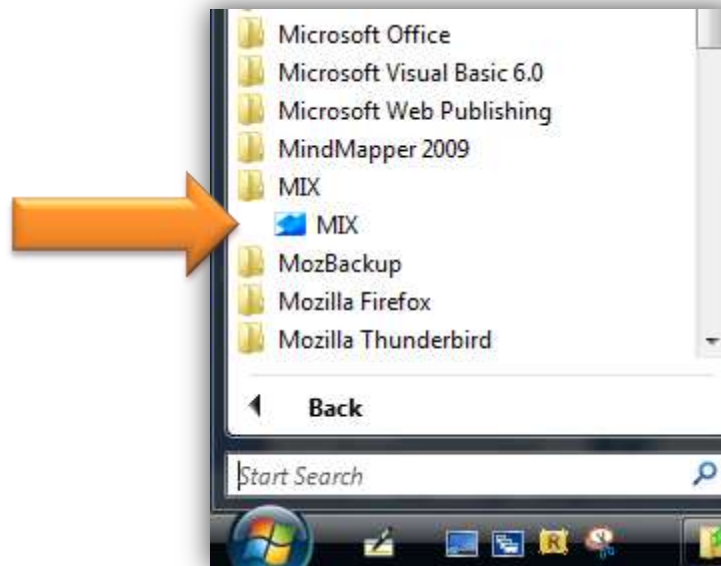
Loading built-in datasets

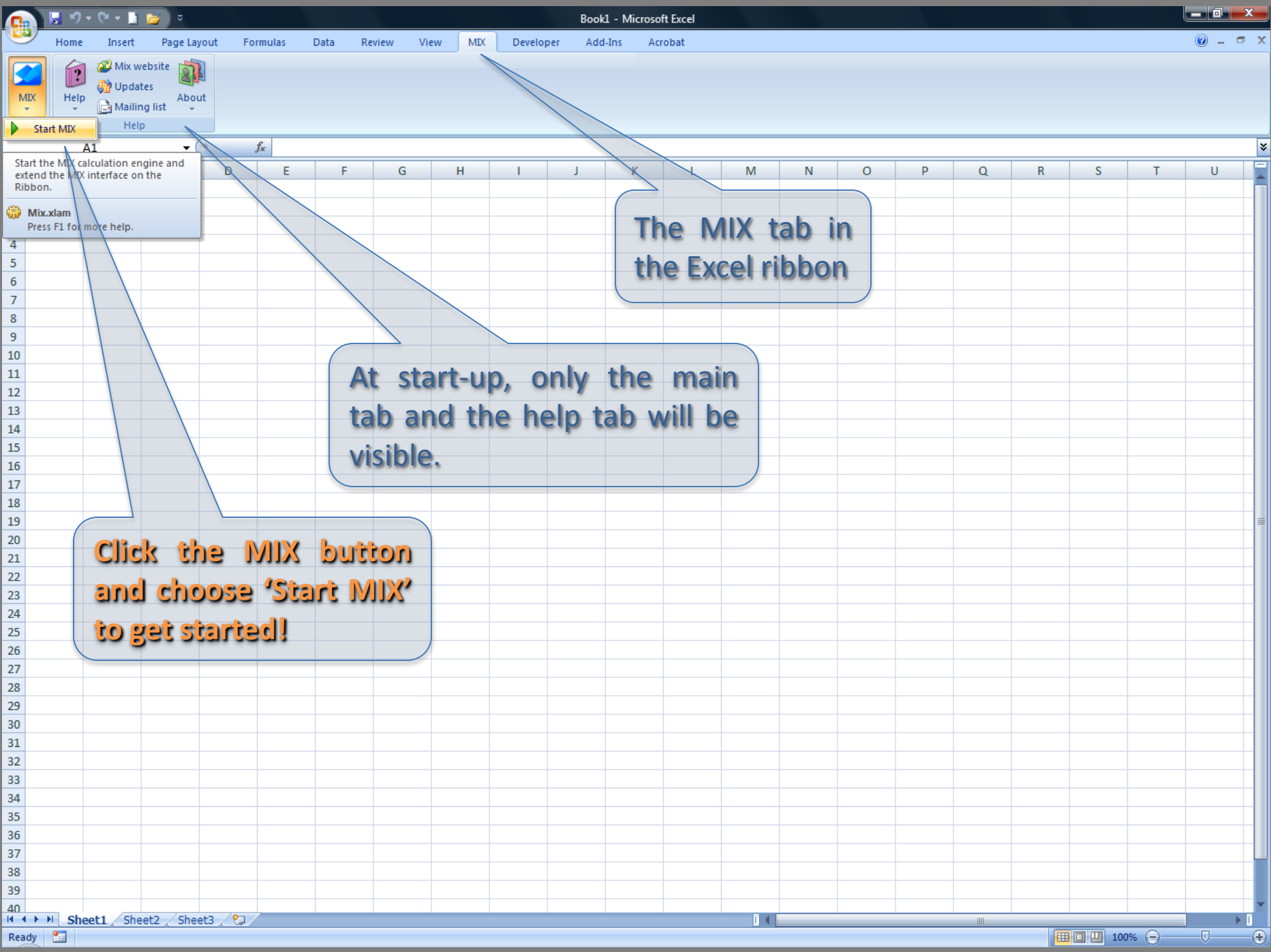
Built-in datasets

- MIX 2.0 contains a large number of built-in datasets
- The datasets are expanded regularly and the dataset database can be updated
- Loading a dataset is easy as 1-2-3...
- Let's have a look...

Start MIX 2.0...

- You can start MIX via the Windows Start Menu...





The MIX tab in the Excel ribbon


At start-up, only the main tab and the help tab will be visible.

Click the MIX button and choose 'Start MIX' to get started!

	A	B	C	D	E	F	G	H	I	J	K	L	M	N	O	P	Q	R	S	T	U
1																					
2																					
3																					
4																					
5																					
6																					
7																					
8																					
9																					
10																					
11																					
12																					
13																					
14																					
15																					
16																					
17																					
18																					
19																					
20																					
21																					
22																					
23																					
24																					
25																					
26																					
27																					
28																					
29																					
30																					
31																					
32																					
33																					
34																					
35																					
36																					
37																					
38																					
39																					
40																					

The following dialog box will appear...

You are about to use MIX 2.0 Lite Beta 2...



Thank you for testing MIX 2.0 Lite, beta 2. This version only allows you to load and analyze the built-in MIX datasets and is a prototype for the Lite version of MIX 2.0.

Please report all bugs and give us feedback for improvements.

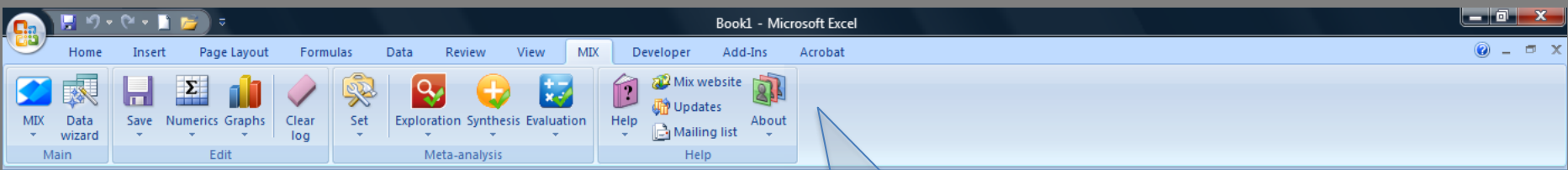
What would you like to do?

- Start the datawizard...
- See the tutorials... (requires internet connection)
- Check for updates... (requires internet connection)

The solver add-in
Install the solver add-in before you start using MIX 2.0. The solver is used for some random effects and regression analyses.
[See tutorial on MIX 2.0 website](#)

You have a number of options here. To load built-in datasets, choose 'Start the datawizard...'

At the bottom you can view a random tip...



A42

	A	B	C	D	E	F	G	H	I	J	K	L	M	N	O	P	Q	R	S	T	U
1	Dataset																				
2																					
3	id	author	year	g1.r1	g1.r0	g1.n	g0.r1	g0.r0	g0.n												
4	1		1992	28	176	204	51	151	202												
5	2		1962	70	215	285	38	109	147												
6	3		1963	37	119	156	40	79	119												
7	4		1981	2	86	88	3	27	30												
8	5		1969	0	30	30	3	30	33												
9	6		1988	61	218	279	82	194	276												
10	7		1970	41	165	206	55	151	206												
11	8		1965	20	103	123	24	105	129												
12	9		1989	111	907	1018	113	902	1015												
13	10		1968	81	346	427	27	116	143												
14	11		1971	31	213	244	51	202	253												
15	12		1961	17	33	50	12	38	50												
16	13		1972	23	24	47	20	28	48												
17	14		1992	0	30	30	4	56	60												
18	15		1975	1025	4527	5552	723	2066	2789												
19	16		1969	174	250	424	178	244	422												
20	17		1968	28	171	199	31	163	194												
21	18		1971	42	308	350	48	319	367												
22	19		1991	4	75	79	5	73	78												
23	20		1978	37	1112	1149	48	1081	1129												
24	21		1978	39	182	221	28	209	237												
25	22		1965	8	46	54	1	25	26												
26	23		1984	5	66	71	7	65	72												
27	24		1989	269	4272	4541	248	4268	4516												
28	25		1990	49	372	421	62	355	417												
29	26		1987	0	94	94	1	93	94												
30	27		1993	19	292	311	12	305	317												
31	28		1984	68	1838	1906	71	1829	1900												
32	29		1987	44	2007	2051	43	1987	2030												
33	30		1991	33	6549	6582	3	1660	1663												
34	31		1978	236	5095	5331	181	5115	5296												
35	32		1990	0	48	48	1	48	49												
36	33		1990	1	93	94	0	52	52												
37	34		1973	1	22	23	2	27	29												

The full interface of MIX 2.0 will now be available in the Excel ribbon...

... and the raw data of the loaded dataset will be shown in the MIX live result sheet...



That's all there is to it...