

# MIX 2.0

Meta-analysis Made Easy

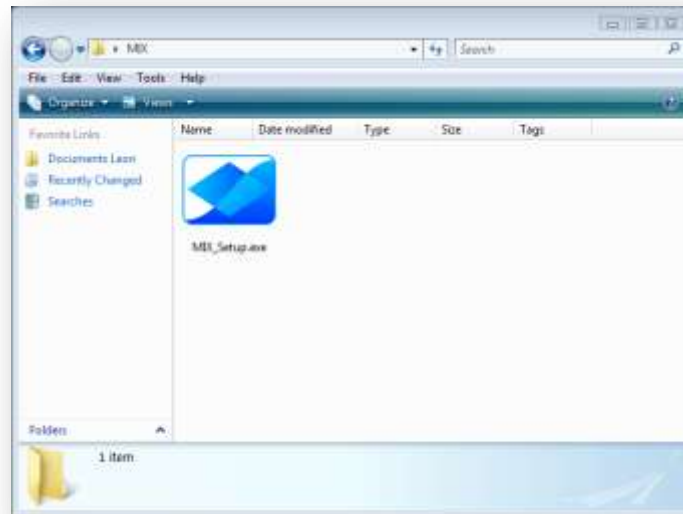


## Installing MIX 2.0



## Double click the set-up file

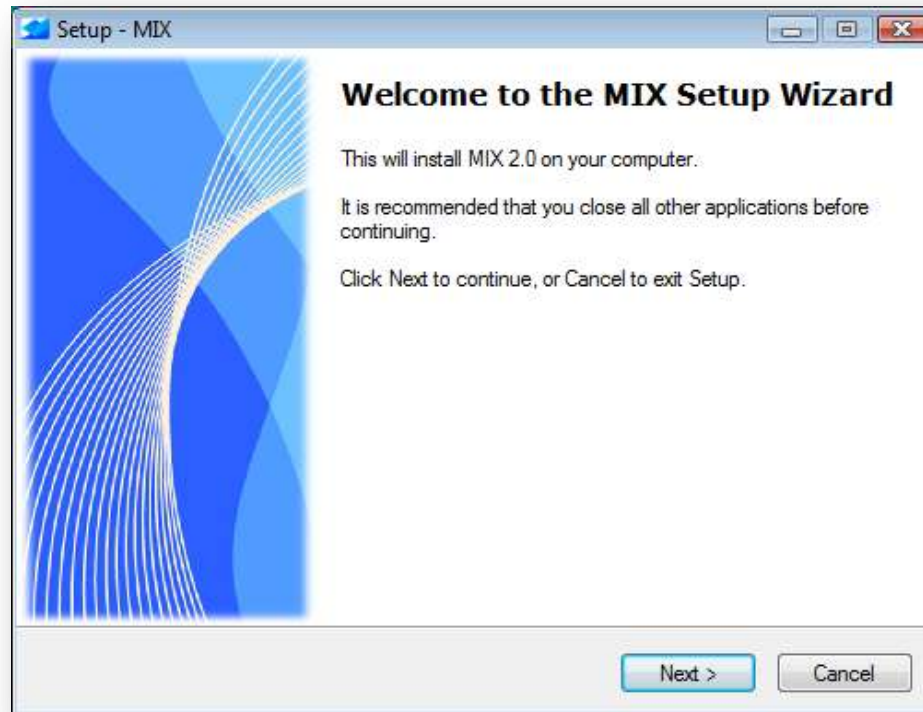
The setup file of MIX beta-versions can be downloaded via the internet and saved somewhere on your PC like this...





## The set-up dialog will appear

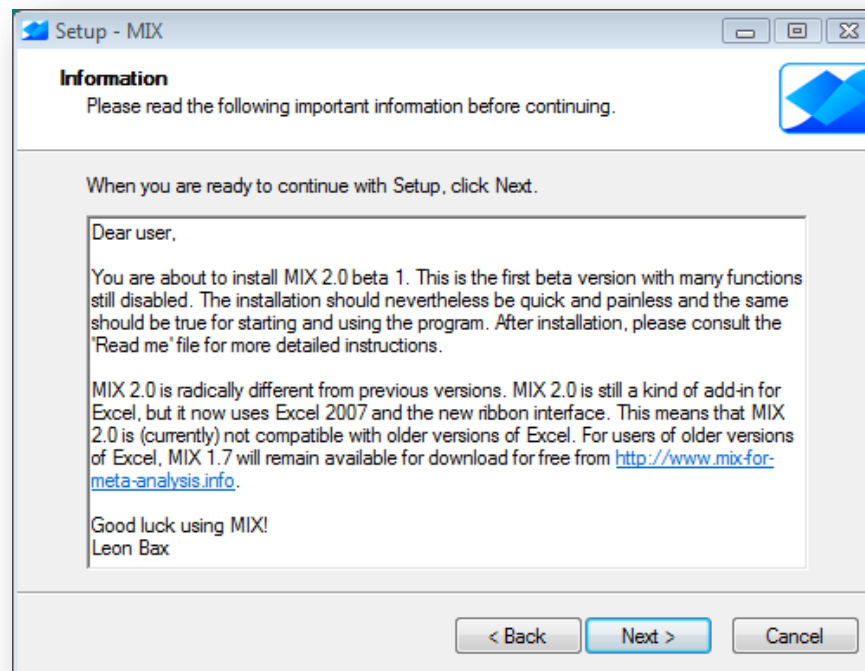
Click 'Next' to start the installation





## Read the short introduction

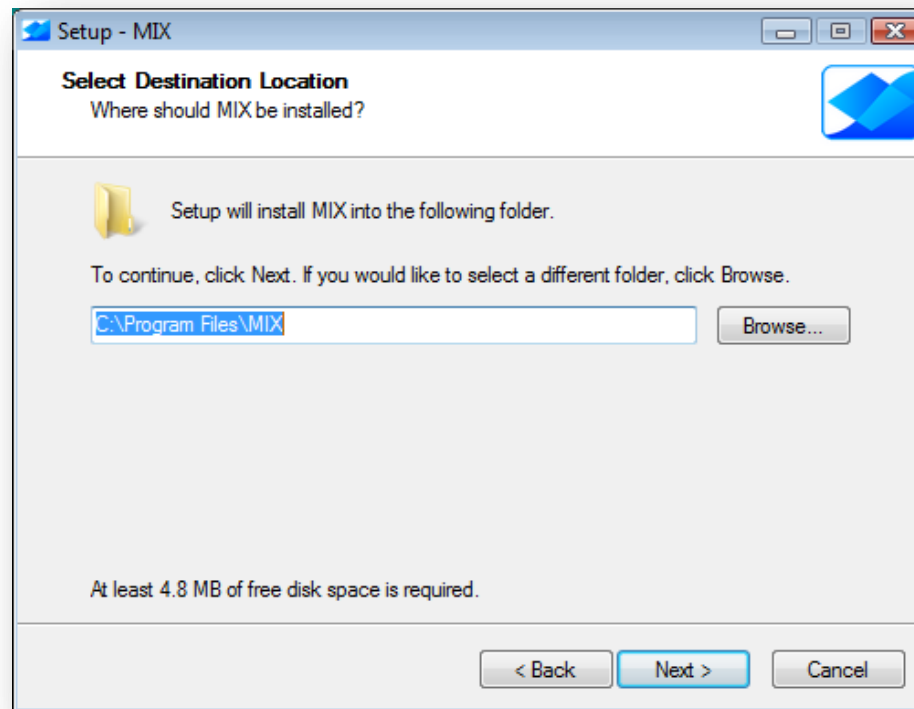
Read this basic information and click 'Next'





## Choose where to install MIX

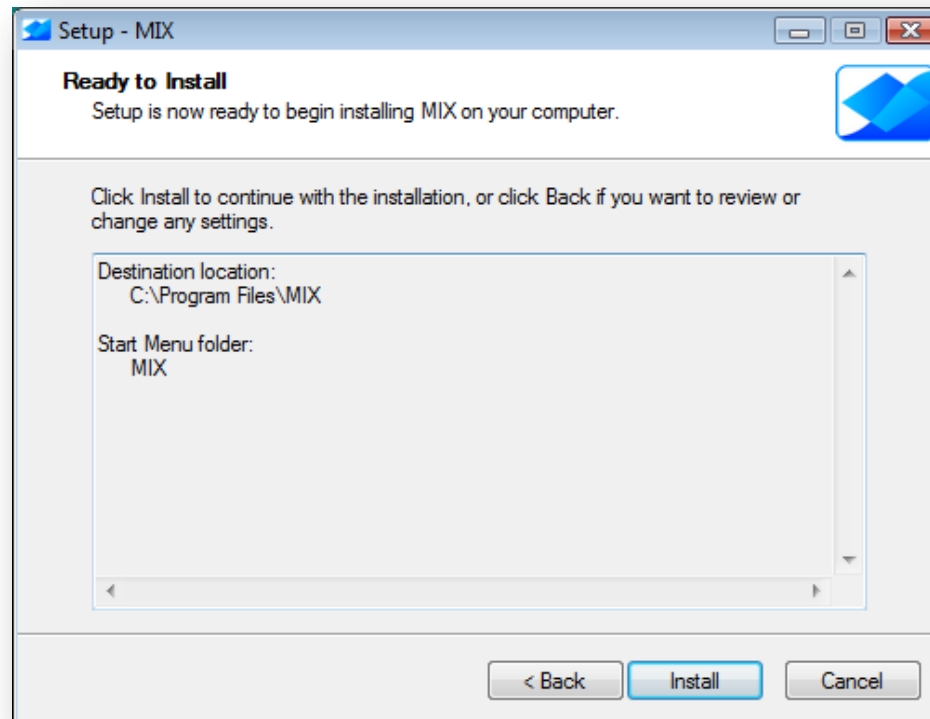
The default location is C:\Program Files\MIX





## Installation

If you're happy so far, click 'Install'







## Finished!

You can check the Web site and first-use info





**That's all there is to it...**

Good luck with your meta-analysis!